



DEFENSE BLOK™ - REVOLUTIONIZING WEAR AND ABRASION PROTECTION



DFENSE BLOK™

4X better abrasion resistance than competition*

7X better drop impact strength than ceramic tile**

- Superior sliding abrasion resistance
- Withstands high impact conditions
- Less prone to unexpected fractures

Fast and easy to apply

- Non-sagging on:
 - Vertical surfaces at 3/4" thickness
 - Overhead surfaces at 1/2" thickness
- Functional Cure: 4 – 5 hours

Use DFense Blok™ Surface Wetting Agent for superior performance in the most severe conditions —

3X stronger than the competition***

- Zero wait time before applying DFense Blok™
- Allows superior adhesion to vertical and overhead surfaces
- Use in place of expanded metal
- Orange color for easy visual inspection

ORDER INFORMATION

Description	Part No.	Size
DFense Blok™ Wearing Compound	11330	30 lbs.
DFense Blok™ Surface Wetting Agent	11340	1 lbs.

* Grit-blast abrasion testing at 40 psi, blasted with #14 silicon carbide at a 45° angle.

** Tested using 85 lb. weight with 0.25 sq. in. striking surface.

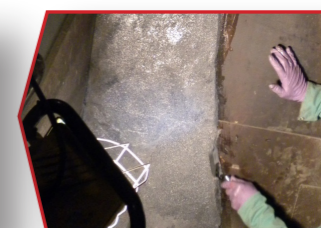
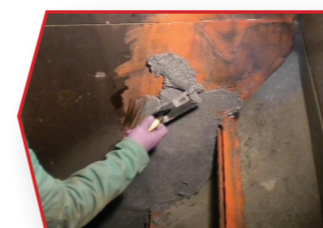
*** Testing per ASTM D 1002.

DFENSE BLOK™ WEAR & ABRASION PROTECTION

DFense Blok™ is a new, innovative line of specially formulated wear and abrasion products designed to outperform and outlast traditional wear and abrasion epoxies, while also providing superior performance in the most severe conditions.

DFENSE BLOK™ PRODUCTS ARE IDEAL FOR:

- Repairing scrubbers, pipe elbows, cyclones, chutes, bins and hoppers
- Protecting fan blades, float cells, screw conveyors and augers
- Patching holes, leaks and cracks in all types of processing equipment



PHYSICAL PROPERTIES

	DFense Blok™ w/SWA	DFense Blok™ Fast Cure (FC)	DFense Blok™ Quick Patch
Pot Life @ 75° F	25 minutes	15 minutes	4 minutes
Functional Cure	4-5 hours	2-3 hours	30 minutes
Coverage per lb	47 sq. in @ 1/4" (SWA - 1,860 sq. in @ 12 mil)	53 sq. in @ 1/4"	60 sq. in @ 1/4"
Adhesive Tensile Shear	2,616 psi	2,764 psi	2,495 psi
Lap Shear Adhesion	882 psi	886 psi	656 psi
T-Peel Adhesion	44 psi	30 psi	22 psi
Side Impact Adhesion	>113 psi	80 psi	29 psi
Grit Blast Volume Loss	0.25 cc	0.36 cc	0.51 cc
Sliding Abrasion Volume Loss	0.8 cc	0.8 cc	2.0 cc
Drop Impact Strength*	81 in	60 in	24 in

ITW Performance Polymers

North America

30 Endicott Street
Danvers
MA 01923
T. +1 978-777-1100
F. (978) 774-0516
E: info@itwpp.com
www.itwperformancepolymers.com

ITW Performance Polymers

North America

130 Commerce Drive
Montgomeryville, PA 18936
T: 215-855-8450
E: customerservice.na@itwpp.com
www.itwperformancepolymers.com

ITW Performance Polymers

Europe

Bay 150
Shannon Industrial Estate
Shannon, County Clare
Ireland
T. +353 61 771 500
E: customerservice.shannon@itwpp.com
www.itwperformancepolymers.com

ITW Performance Polymers

Europe

Gasvaerksvej 46
9000 Aalborg
Denmark
T: +45 9816 7011
E: customerservice.aalborg@itwpp.com
www.itwperformancepolymers.com

ITW Polymers Asia

10,27F, Xingyuan Building
No. 418, Guiping Rd.
Cao He Jing Hi-Tech Park
Shanghai
China 200233
T. 021-54261212
www.itwppchina.com

30-32 Enoki-cho,
Suita, Osaka 564-0053
Japan
T. +81-6-6330-7118
www.itwppjapan.com

13th floor, PAX Tower, Unit B
231-13, Nonhyeon-Dong, Gangnam-Gu
Seoul, Korea 135-010
T. +82-2-2088-3560
www.itwppkorea.com

ITW PP&F

Brazil

Rua Antonio Felamingo, 430
Macuco, Valinhos, SP 13279-452
T: +55 19 2138-7600
www.itwppf.com.br

